

1650 McReynolds Avenue, N.W.
Grand Rapids, Michigan 49504-2043
Phone: (616) 363-4416 Fax: (616) 363-0380
www.bulmanproducts.com

ADJUSTING THE ROTARY CUTTER FOR MATERIAL THICKER THAN 1/2" AND UP TO 7/8"

Slide the rotary cutter to one end of the cutter. Remove the nut from the bolt on the other end. Pull the bolt out until it passes the 1/4in. washer, put more washers on the bolt until the desired height is obtained, (see figure 1) fasten the bolt and nut to the channel, table or other device to which it was detached. Slide the rotary cutter to the other end of the cutter. Repeat the above instructions for adjusting the height of the other end of the cutter. Adjust the rotary cutter blade by loosening the two cap nuts on the rotary shear enclosure. If the material doesn't compress easily adjust the rotary cutter blade so that the two black wheels are raised up off the aluminum track. If you have an A690 unit only, you will require two 1/4" x 6" bolts to make the above adjustments.

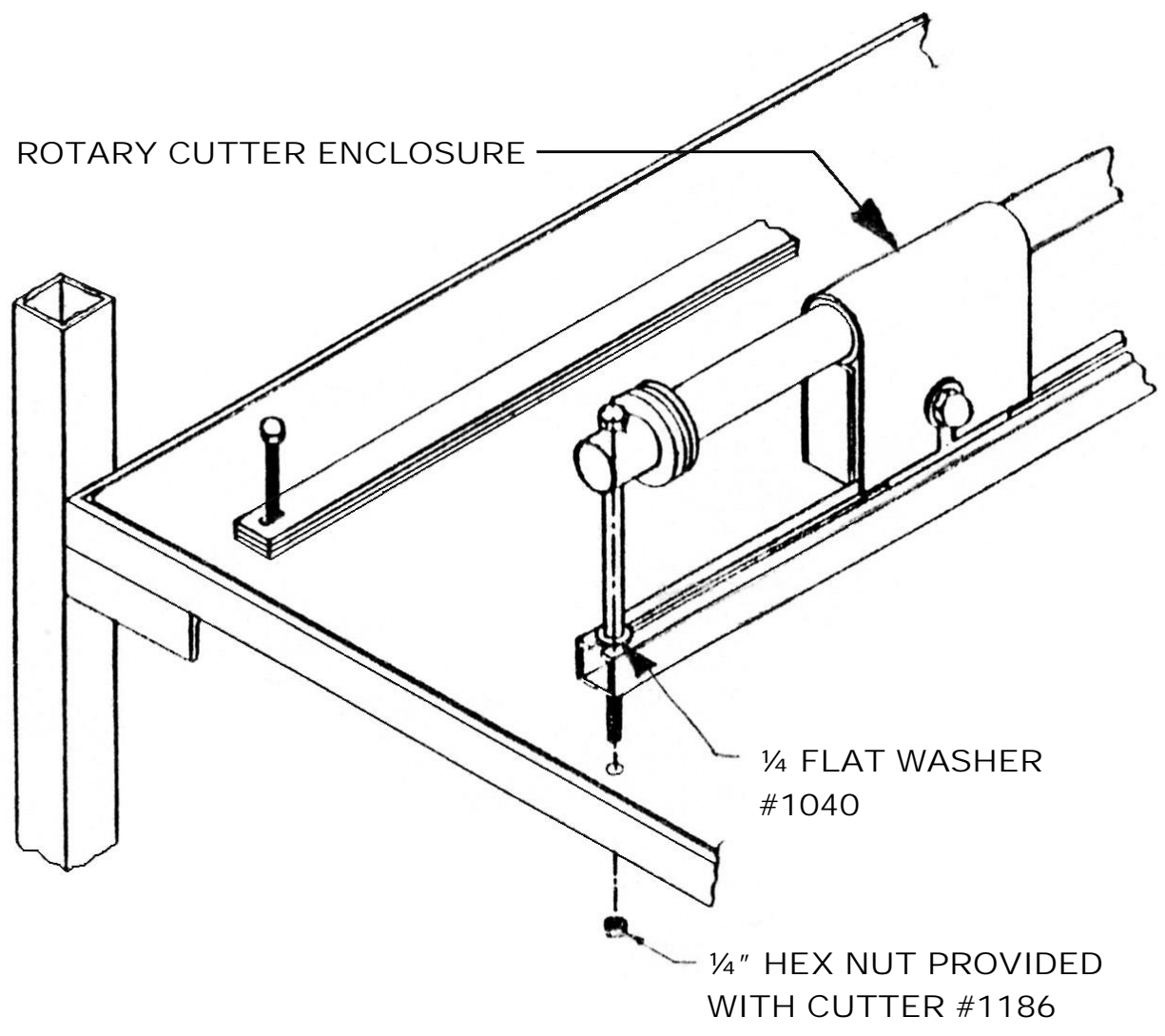


FIGURE 1