

CUTTER ARM ASSEMBLY REPLACEMENT INSTRUCTIONS FOR UNITS WITH DRIVE RIVETS.

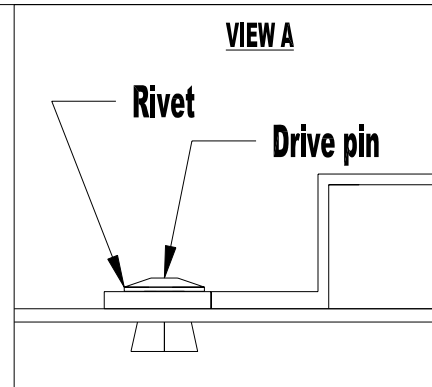
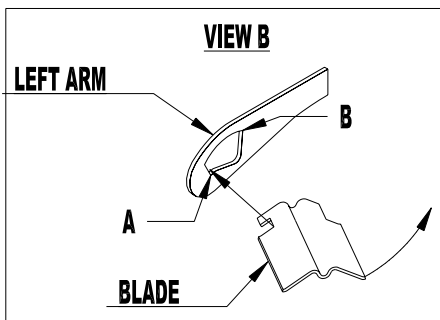
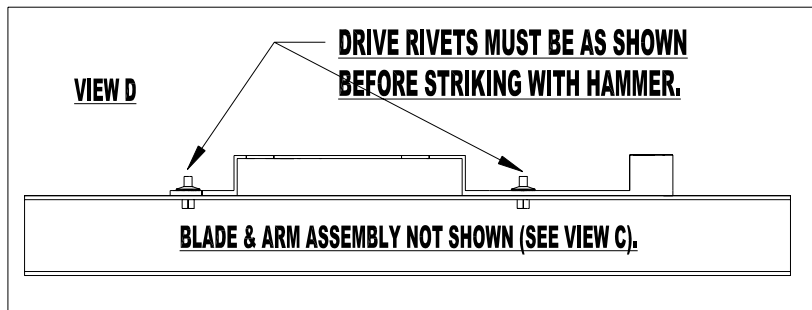
T369 4-HIGH REGULAR T344 4-HIGH SERRATED

Bulman Products, Inc
1650 McReynolds Ave. N.W.
Grand Rapids, MI 49504
Telephone: 616-363-4416
Fax: 616-363-0380

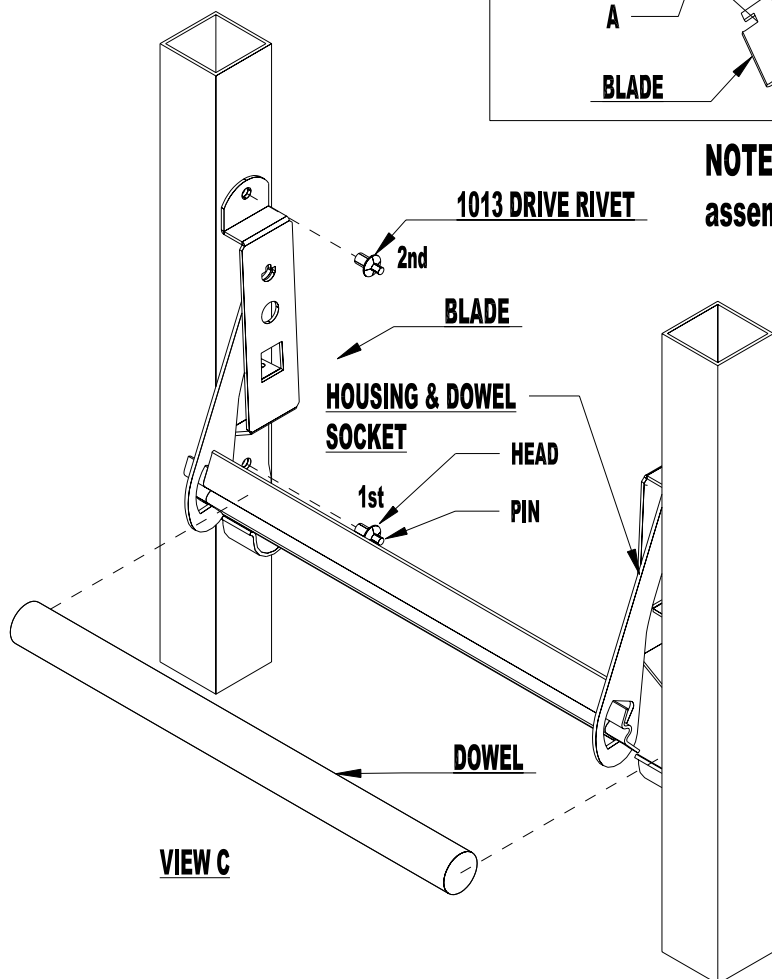
1. USE A PIN PUNCH, NAIL OR SMALL TOOL TO DRIVE THE RIVET PIN INTO THE HOLOW TUBE. REPEAT ON THE OTHER DRIVE RIVETS IF NECESSARY.
2. AFTER THE DRIVE RIVET PINS ARE PUNCHED THROUGH, REMOVE AND REPOSITION THE CUTTER ARM ASSEMBLY CORRECTLY. INSERT BLADE IF NECESSARY (SEE VIEWS B & C).
3. INSTALL THE NEW DRIVE RIVETS BY STRIKING WITH A HAMMER UNTIL THE DRIVE PIN IS FLUSH WITH THE TOP OF THE RIVET (SEE VIEW A & D).

DESCRIPTION	PART NO.
DRIVE RIVET	1013
RIGHT HOUSING & DOWEL SOCKET	36901RG
LEFT HOUSING & DOWEL SOCKET	36901LG
REGULAR BLADE	227 *
SERRATED BLADE	233 *
WOOD DOWEL	173 **
METAL DOWEL	197 ***

*0909,1212,1515,1818,
 2020,2424,2727,3030,3636,4848
 **09,12,15,18,20,24,27,30,36
 ***09,12,15,18,20,24,27,30,36,48



NOTE: Do not open the arm on the housing assembly prior to mounting the housing assembly.



1. Put both rivets thru holes in housing and square tubing as shown.
2. Hold 2nd rivet and housing with one hand. Hit the 1st rivet with a hammer until the pin is flush with the head of the rivet.
3. Hold the housing with one hand and hit the 2nd rivet with a hammer until the pin is flush with the head of the rivet.

NOTE: THE DOWEL RESTS IN THE DOWEL SOCKETS NOT ON THE TEAR OFF BAR.

C:\C7\PARTS\IRPLCMNT2.PRT LEVEL 1,50 8-19-1999
 C:\C7\PARTS\IRPLCMNT2.ckd