

1650 McReynolds Ave., N.W.
Grand Rapids, Michigan 49504-2091
Phone: 616/363-4416, Fax: 616/363-0380
www.bulmanproducts.com

A692R
PACKING/DISPENSING TABLE ASSEMBLY INSTRUCTIONS
5/08/13

1. UNIT IS SHIPPED COMPLETE IN ONE CARTON. BEGIN ASSEMBLY BY FASTENING THE 2 REAR LEGS AND 2 FRONT LEGS AS SHOWN IN FIGURES 1 AND 2. MAKE CERTAIN THAT REAR LEGS WITH FOUR HOLES ARE ATTACHED AT THE BACK OF THE TABLE TOP. TABLE TOP BACK AREA CAN BE DETERMINED BY LOCATING HOLD-DOWN T-BOLTS. (SEE FIGURE 4.)

FRONT LEGS ARE ATTACHED WITH 1/4-20 X 2" LONG HEX BOLTS. REAR LEGS REQUIRE 1/4-20 X 4" LONG HEX BOLTS TO ALLOW SECURING OF THE DOWEL SOCKET UPRIGHT. (SEE FIGURE 3.)

2. FASTEN THE TWO SIDE LEG BRACES AND REAR LEG BRACE AS SHOWN IN FIGURE 1. UNIT CAN NOW BE PUT IN UPRIGHT POSITION TO ATTACH THE TWO DOWEL SOCKET UPRIGHTS AS SHOWN IN FIGURE 3. TIGHTEN ALL NUTS AND BOLTS.
3. SEE FIGURE 4 FOR ATTACHMENT OF THE 3 HOLD-DOWN BARS AND FIGURE 5 FOR OPTIONAL ROTARY SHEAR CUTTER. TABLE IS NOW READY FOR MATERIAL TO BE LOADED ONTO THE FEED DOWEL UNDER THE TABLE AND THE FEED DOWEL AT THE TOP OF THE UPRIGHTS.

HARDWARE

- 4 1/4-20 X 4" HEX HEAD BOLT
- 20 1/4-20 X 2" HEX HEAD BOLT
- 20 5/16 SAE FLAT WASHER
- 20 1/4-20 HEX SOCKET NUT
- 4 3/4" SPACER
- 2 #10 3" ROUND HEAD BOLT
- 2 #10 FLAT WASHER
- 2 #10 ACORN NUTS



HARDWARE FOR OPTIONAL ROTARY SHEAR CUTTER

- 2 10-24 X 1 3/4" SLOTTED SCREW
- 2 #10 FLAT WASHER
- 2 #10 HEX SOCKET NUT

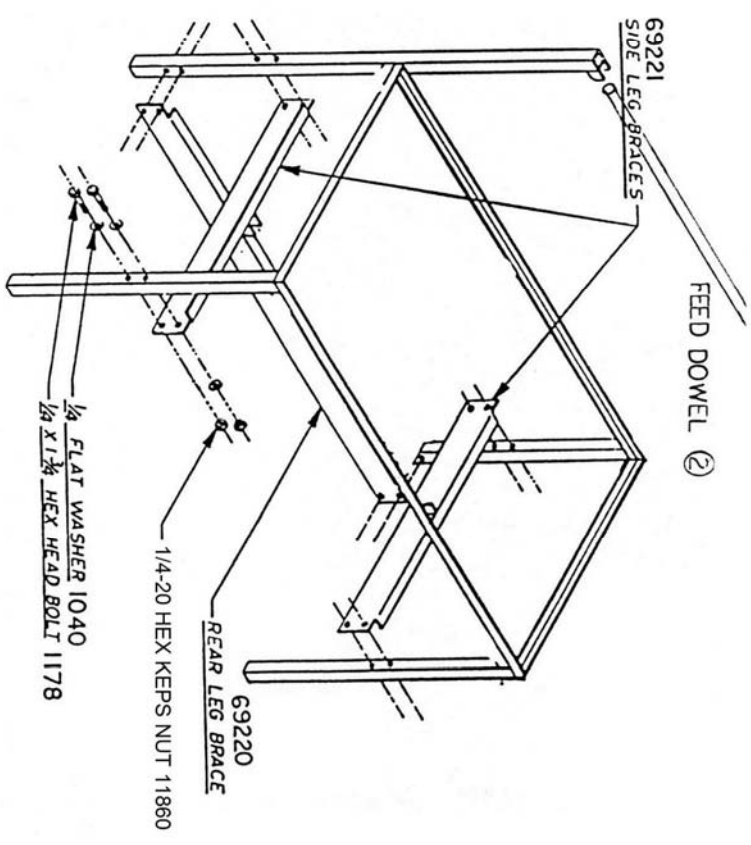


FIGURE 1

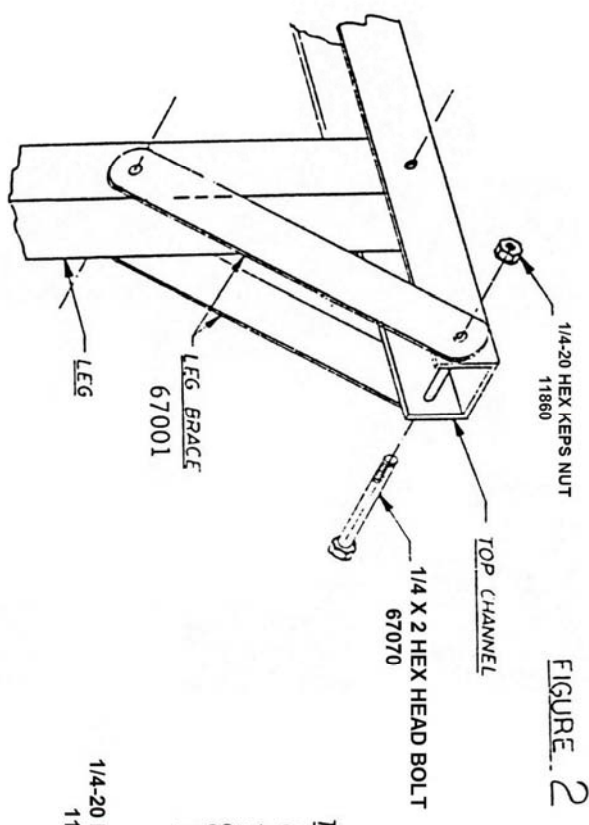


FIGURE 2

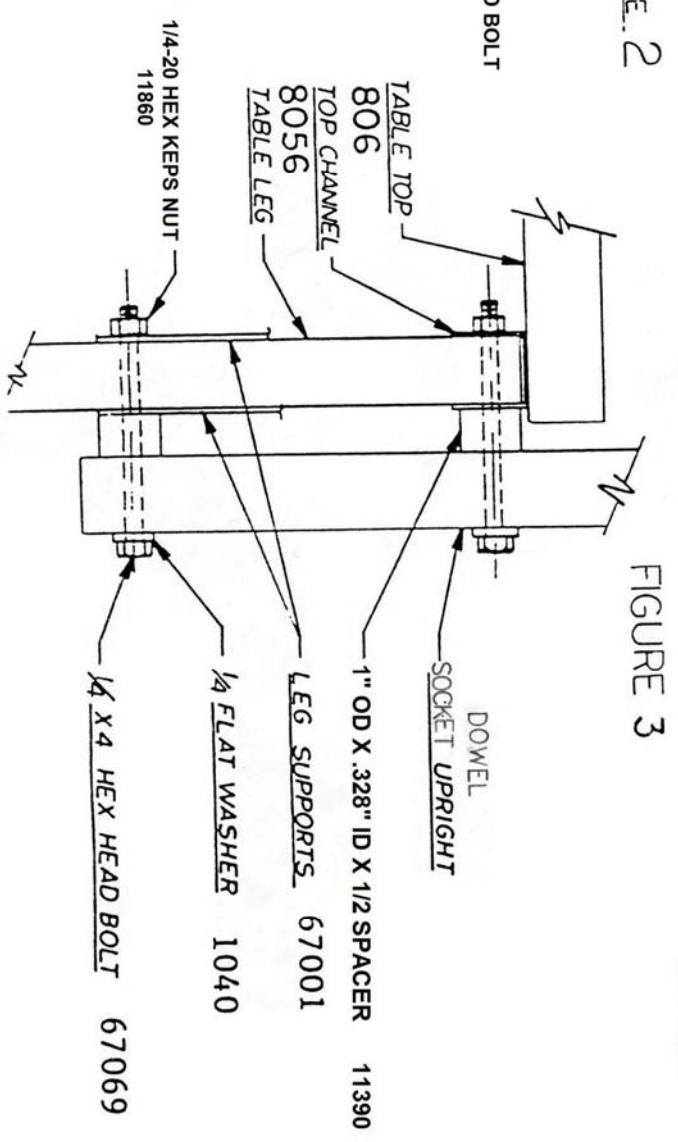


FIGURE 3

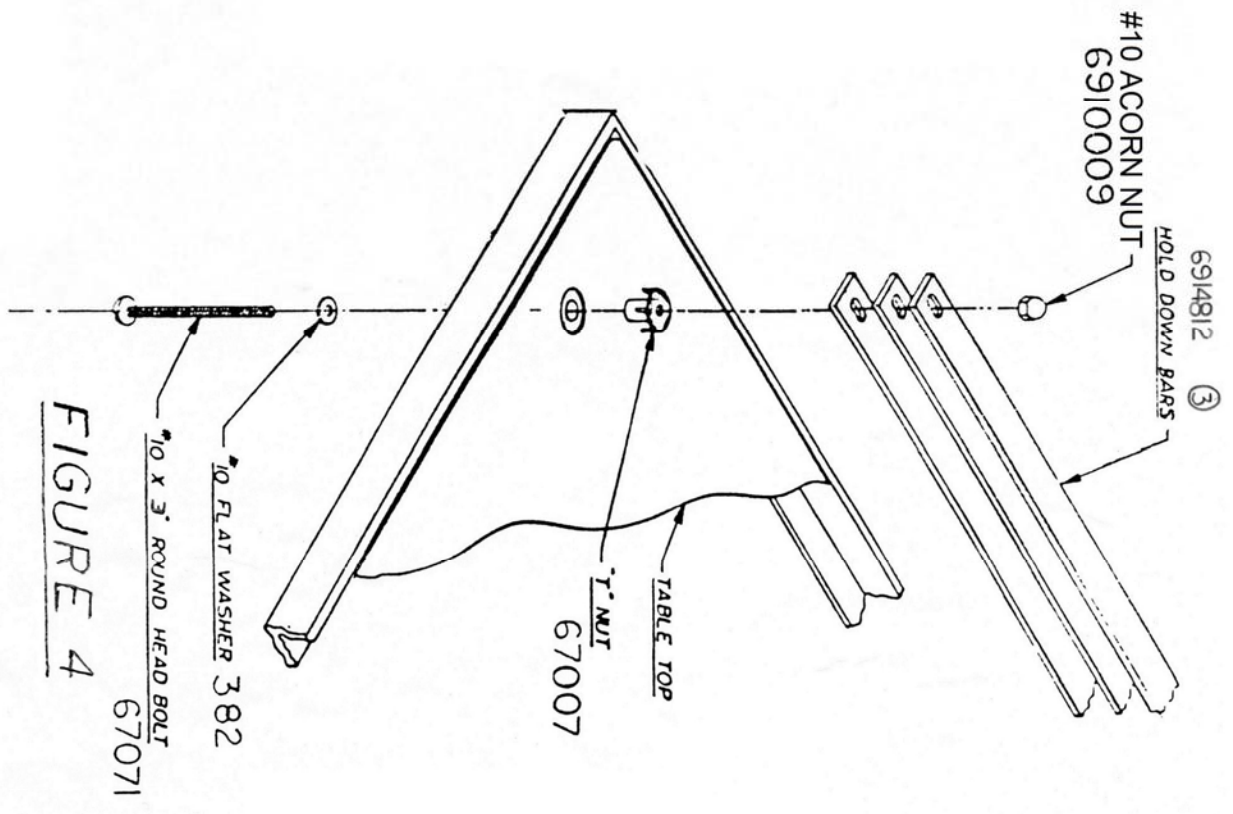


FIGURE 4

67071

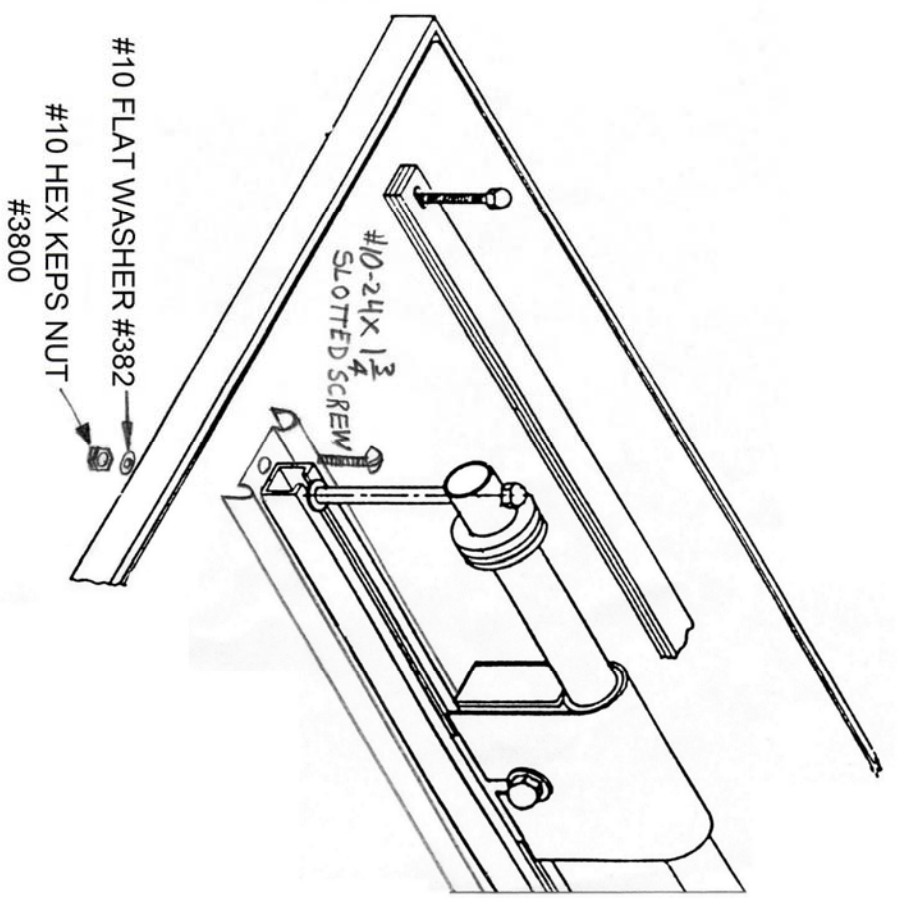


FIGURE 5
OPTIONAL CUTTER
ASSEMBLY

#A690-48