

1650 McReynolds Avenue, NW
 Grand Rapids, Michigan 49504-2091
 616/363-4416, 616/363-4417 Fax: 616/363-0380
 www.bulmanproducts.com

A694 ROTARY SHEAR WITH HOLD DOWNS

INSTRUCTIONS

1. FASTEN THE BASE TO A TABLE USING THE 4 HOLES IN THE BASE.
2. SLIDE THE ROTARY SHEAR HEAD TO ONE SIDE OF THE ALUMINUM TRACK.
3. FEED MATERIAL UNDER 1 TO 3 HOLD DOWNS.
4. FEED MATERIAL BETWEEN THE TOP OF THE ALUMINUM TRACK & BELOW THE GUIDE TUBE TO YOUR DESIRED LENGTH.
5. SLIDE ROTARY SHEAR HEAD TO OTHER SIDE TO CUT MATERIAL.

ROTARY CUTTER ASSEMBLY

PART NO.	SIZE
691241	24
691361	36
691481	48
691601	60

ROTARY SHEAR GUIDE TUBES

SIZE	PART NO.
24	691244
36	691364
48	691484
60	691604

ROTARY SHEAR HEAD ASSEMBLY #69022
 ROTARY SHEAR KNIFE ASSEMBLY #69015

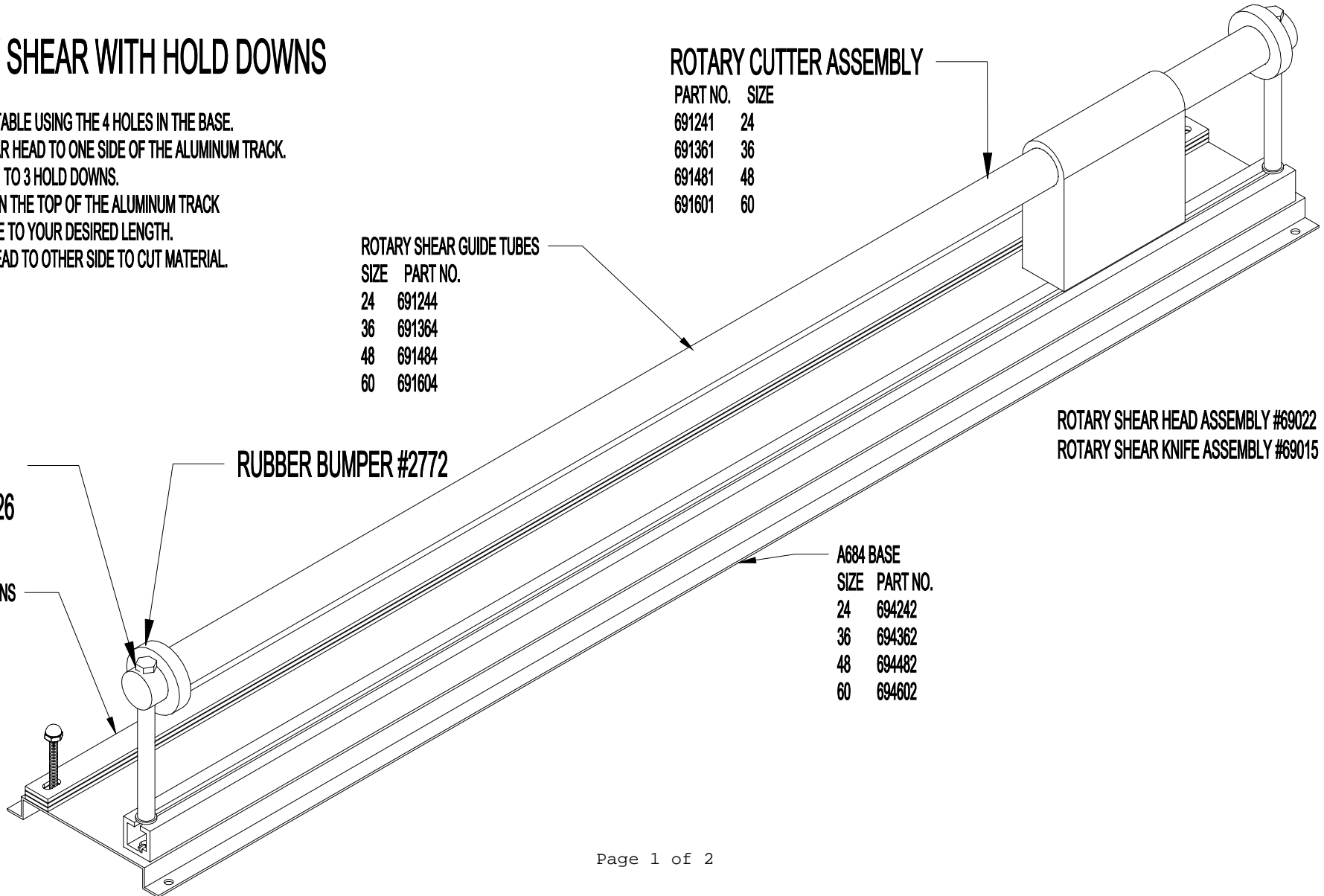
1/4 X 5-1/2
 HEX BOLT #69026

RUBBER BUMPER #2772

A684 BASE
 SIZE PART NO.
 24 694242
 36 694362
 48 694482
 60 694602

A684 HOLD DOWNS

SIZE	PART NO.
24	6912411
36	6913612
48	6914812
60	6916011



1650 McReynolds Avenue, N.W.
 Grand Rapids, Michigan 49504-2043
 Phone: (616) 363-4416 Fax: (616) 363-0380
 www.bulmanproducts.com

ROTARY HEAD REPLACEMENT

1. DISASSEMBLE ONE END OF THE CUTTER TO REMOVE THE OLD CUTTING HEAD.
2. REPLACE WITH NEW CUTTING HEAD AND REASSEMBLE CUTTER.
 MAKE SURE BLADE FITS BETWEEN HARDENED BLUE STEEL BLADE AND ALUMINUM TRACK AND DOESN'T RIDE ON FOAM.
3. LOOSEN CAP NUTS TO ADJUST KNIFE HEIGHT FOR MATERIAL THICKNESS.
 THERE SHOULD BE A GAP BETWEEN THE BLACK RUBBER WHEELS AND ALUMINUM TRACK.

FOR ILLUSTRATION PURPOSES
 SOME FEATURES ARE NOT SHOWN.

THE BEARINGS ARE GLUED IN PLACE.
 THE BEARINGS ARE NOT SERVICEABLE.

DESCRIPTION	PART NO.
ROTARY HEAD COMPLETE	69022
ROTARY HOUSING ASSEMBLY	69019
ROTARY KNIFE ASSEMBLY	69015
CAP NUT(2-REQ'D)	69005
AXLE(2-REQ'D)	69002
5/16 FLAT WASHER(4-REQ'D)	1008
A690R & A691R FOAM & BLADE ASSEMBLY SIZES	
24"	364244
36"	364255
48"	364266
60"	364261
A692 FOAM & BLADE ASSEMBLY	364266

