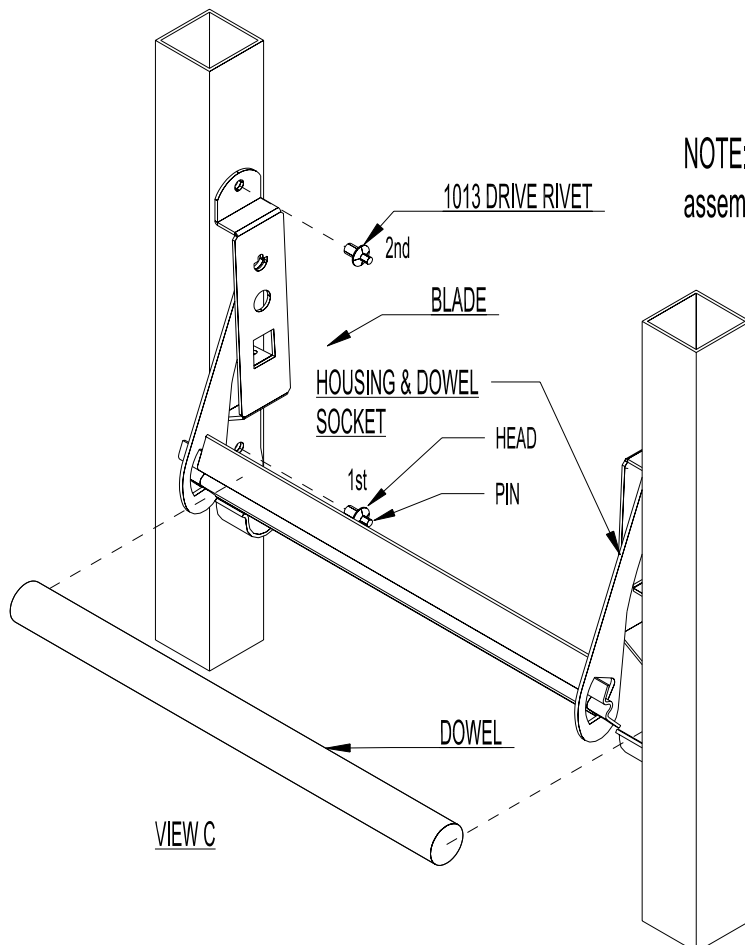
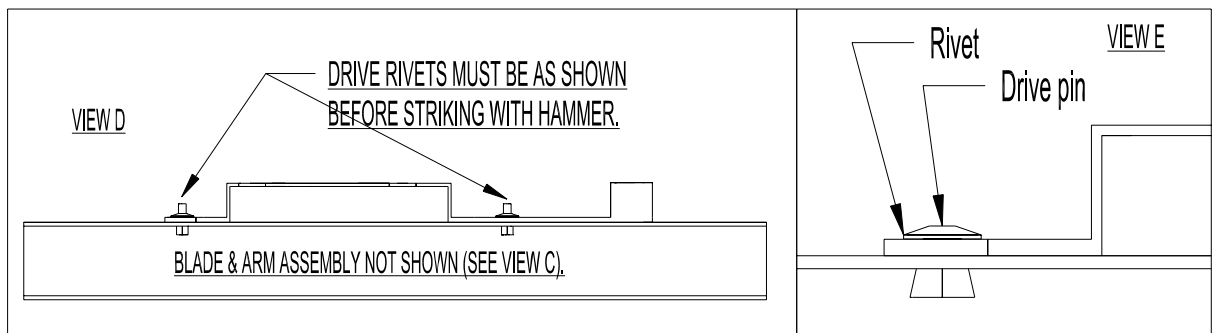


## ASSEMBLY INSTRUCTIONS FOR THE THREE DECK TOWER UNIT T368R-48 3-HIGH REGULAR T343R-48 3-HIGH SERRATED

TOOLS: HAMMER & TWO 7/16 WRENCHES

1. Place the upright, top cross tube, assembled upright & bottom cross tube on a table making a rectangle as shown in View A.
2. Fasten a 1/4 x 2 bolt with one 1/4 flat washer & 1/4 keps nut at each top end of the frame shown in View A.
3. Fasten a foot to the bottom cross tube & upright using two 1/4 x 2" bolts with one 1/4 keps nut & one flat washer each. See View A.
4. Repeat step 3 by fastening the other foot to the bottom cross tube & the assembled upright. (Tighten all nuts & bolts)
5. Lay the frame on its upright side. (The side without the housing assemblies on it.)
6. Insert a blade in the hole of a right arm on the assembled upright tube. (See Views B & C.)
7. Insert the left end of the blade in the hole of the left arm as shown in Views B & C.
8. Attach the housing & dowel socket assembly to the appropriate position on the upright with two drive rivets. See View C, D & E. Use a hammer to pound the pin into the rivet while the rivet is inserted into the housing & upright holes.
9. Repeat steps 7 & 8 for the remaining stations.



**NOTE:** Do not open the arm on the housing assembly prior to mounting the housing assembly.

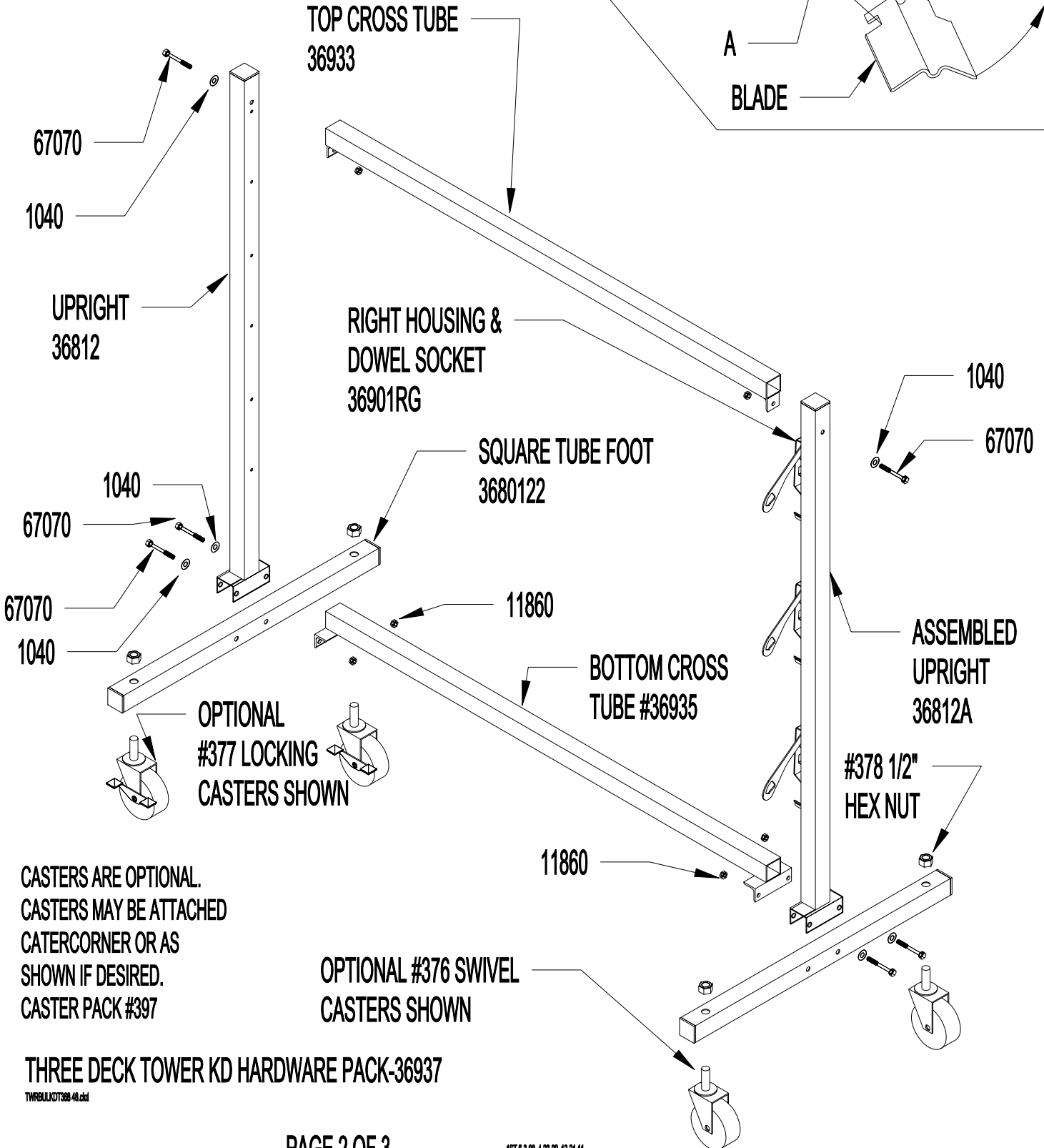
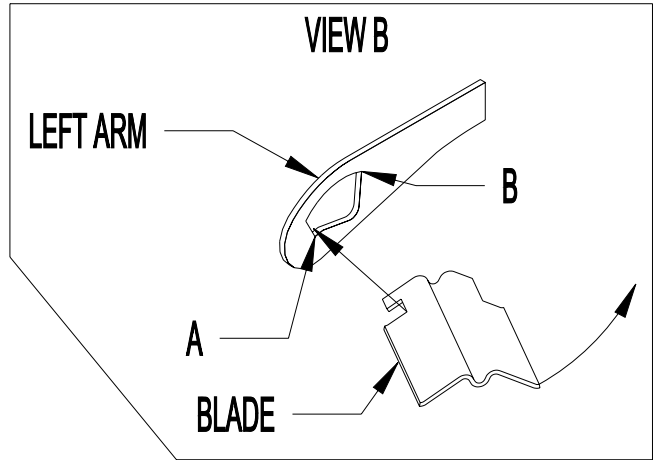
1. Put both rivets thru holes in housing and square tubing as shown.
2. Hold 2nd rivet and housing with one hand. Hit the 1st rivet with a hammer until the pin is flush with the head of the rivet.
3. Hold the housing with one hand and hit the 2nd rivet with a hammer until the pin is flush with the head of the rivet.

**NOTE:** THE DOWEL RESTS IN THE DOWEL SOCKETS NOT ON THE TEAR OFF BAR.

TWRBULKT368-48.dwg LEVELS 210, 211 10-25-2005, 10-21-2011

VIEW A

T368R-48, T343-48



CASTERS ARE OPTIONAL.  
 CASTERS MAY BE ATTACHED  
 CATERCORNER OR AS  
 SHOWN IF DESIRED.  
 CASTER PACK #397

THREE DECK TOWER KD HARDWARE PACK-36937

TWRBULL07388-48.cxd

1650 McReynolds Avenue, N.W.  
 Grand Rapids, Michigan 49504-2043  
 Phone: (616) 363-4416 Fax: (616) 363-0380  
 www.bulmanproducts.com

Parts list for the three high deck tower units.

<u>Quantity</u>	<u>Description</u>	<u>Part Number</u>
1	Three Deck Tower KD Hardware Pack	36937
3	Regular Blades	227____*
3	Wood dowels	173____**
1	Upright	36812
1	Assembled upright with right housing assemblies	36812A
2	Square tube feet	3680122
1	Bottom cross tube for T368R-48	36935
1	Top cross tube for T368R-48	36933
3	Left Housing & Dowel Sockets Assemblies	36901LG

The Three Deck Tower KD Hardware Pack #36937 listed above contains the following parts:

6	¼-20 x 2" Hex bolts	67070
6	¼ Flat washers	1040
6	¼-20 Keps hex nuts	11860
6	Drive rivets	1013

The ¼-20 Keps hex nuts are hex nuts with a free spinning lock washer attached.

The Assembled upright with right housing assemblies listed above contains the following parts:

3	Right Housing & Dowel Socket Assemblies	36901RG
1	Upright	36812
6	Drive Rivets	1013

### Optional Parts

<u>Description</u>	<u>Part Number</u>
Serrated blade	233____*
Metal dowel	197____***
Caster pack	397

\*0909, 1212, 1515, 1818, 2020, 2424, 2727, 3030, 3636, 4848

\*\*09, 12, 15, 18, 20, 24, 27, 30, 36

\*\*\*09, 12, 15, 18, 20, 24, 27, 30, 36, 48